



**26/34-36 Hythe Street Mount Druitt NSW**

2  1  1 

This lovely unit is situated in the heart of suburb with natural views and an open plan layout and spacious floor area it is perfect for any buyer! Currently leased to the same tenant for over 8 years and willing to stay it could be your chance to buy into the ever booming Sydney market!

**Price** : \$ 332,000

**View** : <https://www.skyproperty.com.au/sale/nsw/western-sydney/mount-druitt/residential/unit/7627472>

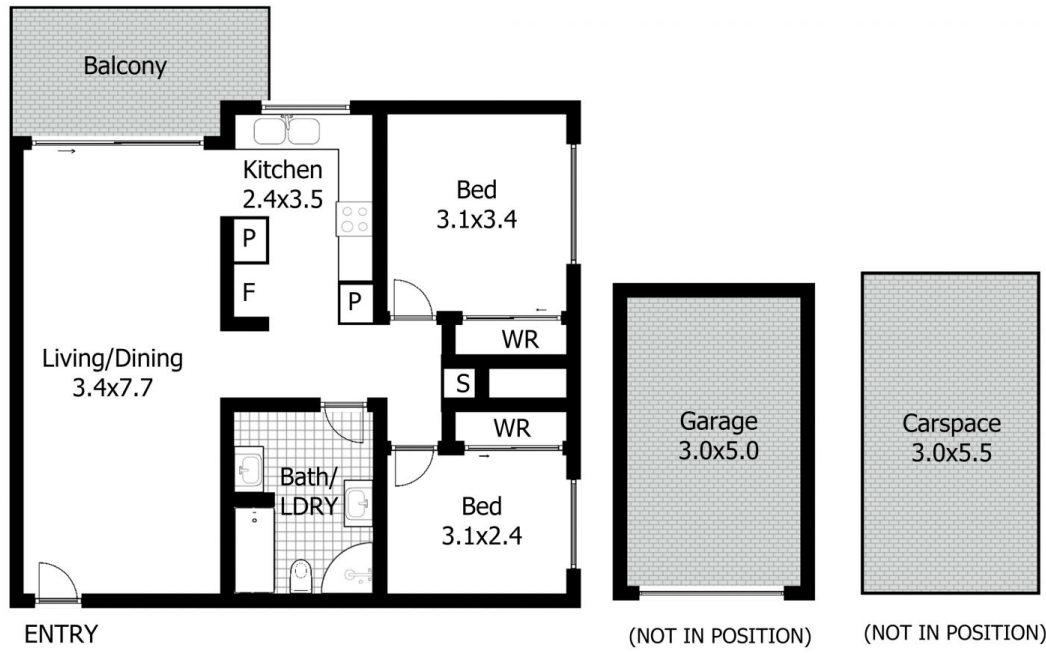
- Open plan living and dining space filled with natural sunlight
- Great flow onto a wide balcony overlooking the neighbourhood greenery
- Kitchen features ample storage with quality steel appliances, near new oven and dishwasher
- Two good sized bedrooms, with mirrored built-in robes
- Large bathroom with shower, toilet and laundry area
- Split system air-conditioning
- Readymade investment option currently leased for \$340 per week with potential of up to \$400



**Faye Abdo**  
0410044566



**Riza Kamerakkas**  
0402 352 123



**DISCLAIMER:**

This floor plan is used for marketing purpose only and is subject to errors and inaccuracy. The marketing Agent & N2 Media will not accept any liability. Interested parties should make and rely on their own enquiries.