






26 Greygum Terrace Marsden Park NSW

3  3  2 

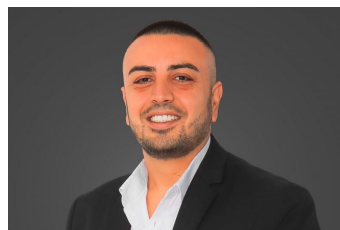
This beautiful 3 bedroom house really stands out from the rest!! Part of the Azure Community homes and also a short stroll to the local park.

The home consists of

- 3 Beautiful Bedrooms with built-ins and ensuite to main
- 3 Bathrooms
- 2 Car Garage
- 2 Downstairs living areas
- Corner home which means only 1 common wall
- Larger block size
- Modern open plan kitchen with Gas appliances
- Air-conditioning
- Beautiful outdoor alfresco area
- Across the road is the park and sporting fields perfect for the family with kids or pets.

Land Size : 222.6 sqm

View : <https://www.skyproperty.com.au/lease/nsw/western-sydney/marsden-park/residential/house/5722497>



Riza Kamerakkas
0402 352 123



Fayez Abdo
0410044566