



**14/5 Drummond Street Warwick Farm NSW**

2  1  1 

A unit that will not disappoint, whether you're looking for a great investment or your first home this unit will sure please.

Situated in a great location only walking distance from Liverpool hospital, local train and bus station, local schools, child care centres and shopping centre what else can you be asking for?

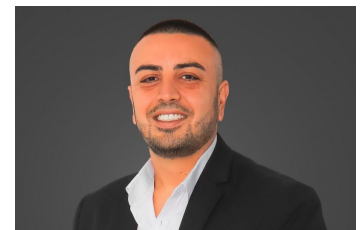
Main features include

- Two Large bedrooms with built-in
- Fair size bathroom with bath-tub
- Large kitchen
- Open plan living and dining
- Internal laundry
- Large split system air conditioning
- Balcony
- Lock-up garage

**View :** <https://www.skyproperty.com.au/sale/nsw/liverpool-fairfield/warwick-farm/residential/unit/5713548>



**Faye Abdo**  
0410044566



**Riza Kamerakkas**  
0402 352 123