






**5 Mistletoe Avenue Claremont Meadows NSW**

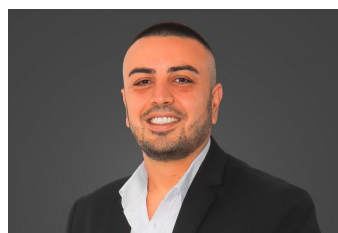
3  1  4 

Located in a quiet street in the heart of Claremont meadows and perfectly positioned close to schools, shops and transport this property will not disappoint.

**View** : <https://www.skyproperty.com.au/sale/nsw/western-sydney/claremont-meadows/residential/house/5713547>

The property offers

- Three good sized bedrooms with built-in wardrobes
- Open plan living and dining areas
- Modern kitchen
- Tiled throughout
- Separate bathroom and toilet, Two way laundry
- Large entertaining area
- Double carport
- Large backyard with plenty of space and a massive frontage



**Riza Kamerakkas**  
**0402 352 123**