



222 Carpenter Street St Marys NSW

4 1 1

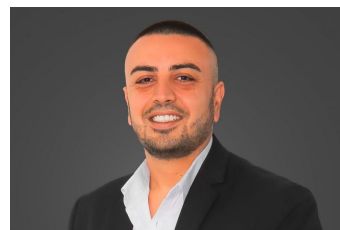
This Brick home located metres from public transport and central to all other amenities is a rare find boasting potential for investors and builders alike (STCA) Property is currently Zoned R2 2(B)

Land Size : 696 sqm
View : <https://www.skyproperty.com.au/sale/nsw/western-sydney/st-marys/residential/house/5713523>

The home boasts the following features

- 4 generous sized bedrooms
- Timber flooring leading to carpeted bedrooms.
- Recently painted
- Large outdoor pergola/entertaining area
- Updated kitchen and bathroom
- Air-conditioning
- Carport
- Currently tenanted at \$430 P/w

Sitting on a 696sqm block this opportunity will not rise again, call now to ensure you do not miss out on this rare



Riza Kamerakkas
0402 352 123