

**248 Carpenter Street St Marys NSW**

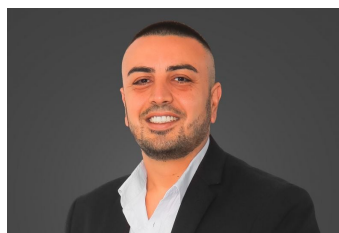
2 1 1

An opportunity to invest in ever developing St Marys. Located within close proximity to local Schools, Shops, Leisure, Public Transport and major arterial hubs this property is boasting with potential.

Property currently consists of

- 2 Large Bedrooms
- Timber flooring throughout
- Updated Kitchen
- Recently renovated

With current Zoning R2 2(B) allowing dwelling houses and dual occupancies, along with neighbourhood shops, community facilities, home businesses, places of public worship and child care centres (S.T.C.A)

**Land Size** : 1100 sqm**View** : <https://www.skyproperty.com.au/sale/nsw/western-sydney/st-marys/residential/house/5713522>**Riza Kamerakkas**  
0402 352 123